

1

2

3

4

A

A

B

B

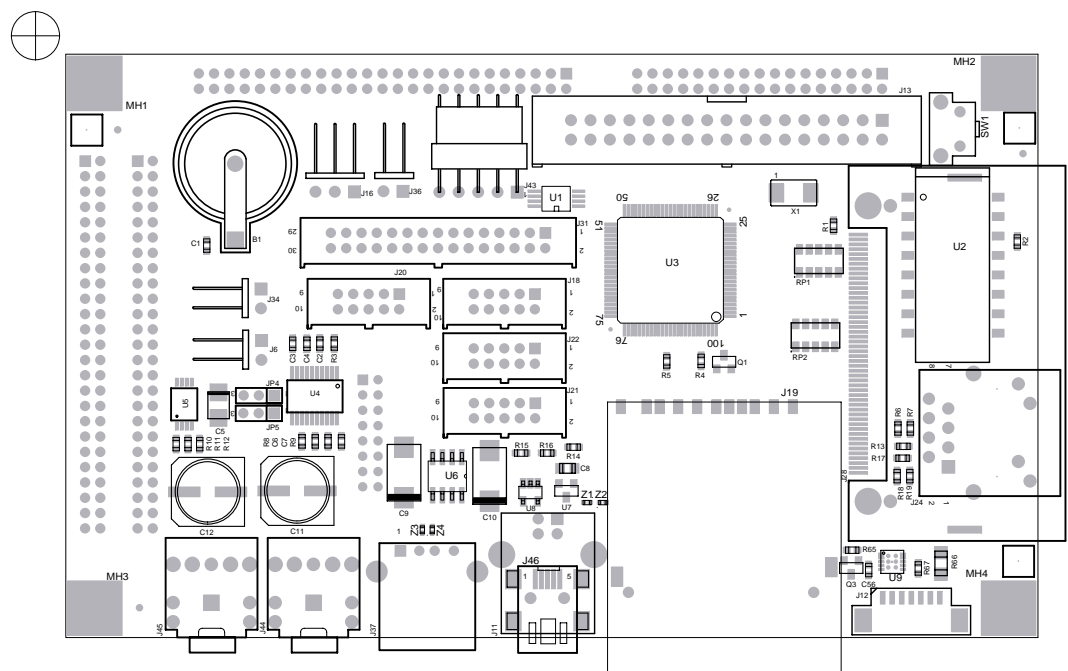
C

C

D

D

REVISIONS			
REV	DESCRIPTION	DATE	APPROVED

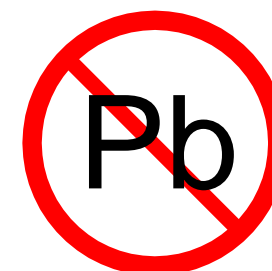


TOP SIDE VIEW

SCALE 1:1

NOTES: UNLESS OTHERWISE SPECIFIED

1. This is a static sensitive assembly- use static eliminating measures during assembly and handling.
2. Manufacture to IPC 610A workmanship standards.
3. Trim component leads within .062 from solder side of PWA with exception of indicated area, which must be trimmed to .010 +/- .010
4. Mark with the appropriate serial number and the current permanent ink. Configuration No. and Revision in the areas indicated using permanent heat resistant labels.
 - a.) Mark with characters at least .08 inch high using
5. All items may not be installed on this configuration of the board. Refer to the Bill of Materials for the exact items and quantities.
6. For clarity, certain components may not be shown on the drawing.
7. For parts list see Bill of Materials 621121-500R1 indicates the revision of the Bill of Materials.



DRAWN	DATE	TITLE			
ENGINEER	DATE	Printed Wiring Assembly,			
CHECKED	DATE	BITSY G5 CB			
APPROVED	DATE	SIZE	CAGE CODE	DWG NO.	REV
ISSUED	DATE	B		620130-500R	1
SCALE 1:1			SHEET 1 OF 2		

1

2

3

4

1

2

3

4

A

A

B

B

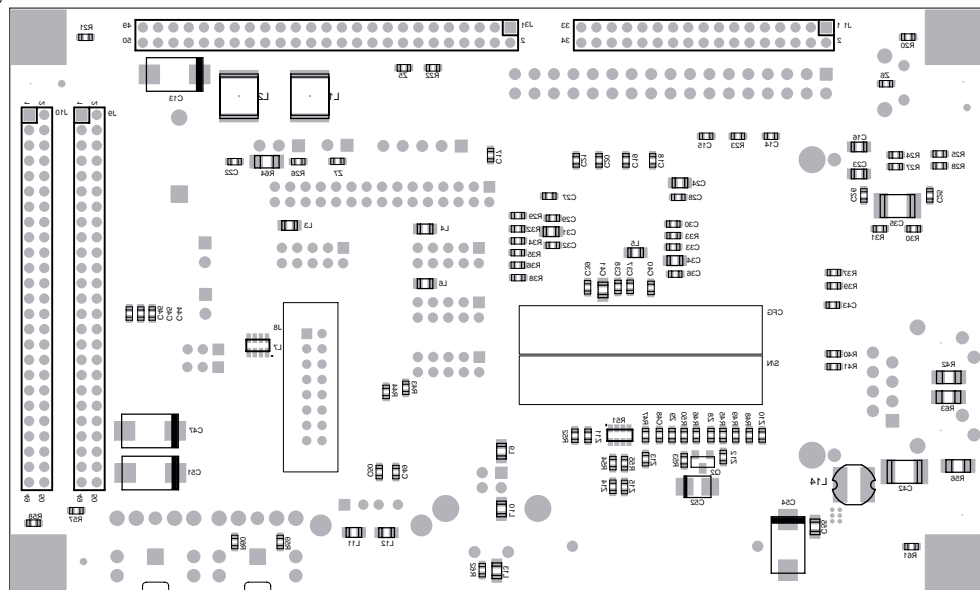
C

C

D

D

REVISIONS			
REV	DESCRIPTION	DATE	APPROVED



BOTTOM SIDE VIEW
SCALE 1:1

SIZE B	CAGE CODE	DWG NO. 620130-500R	REV 1
SCALE 1:1		SHEET 2 OF 2	

1

2

3

4