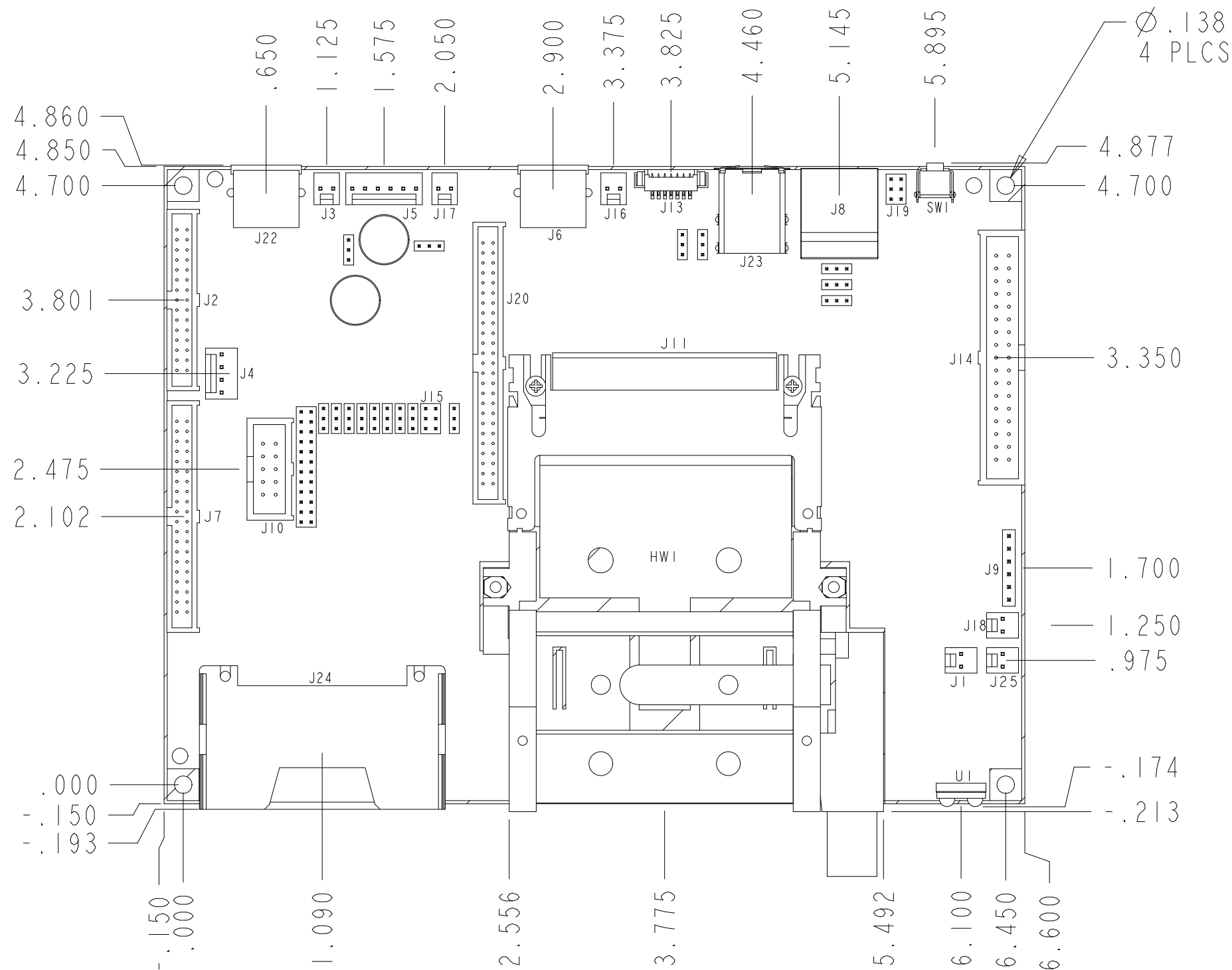
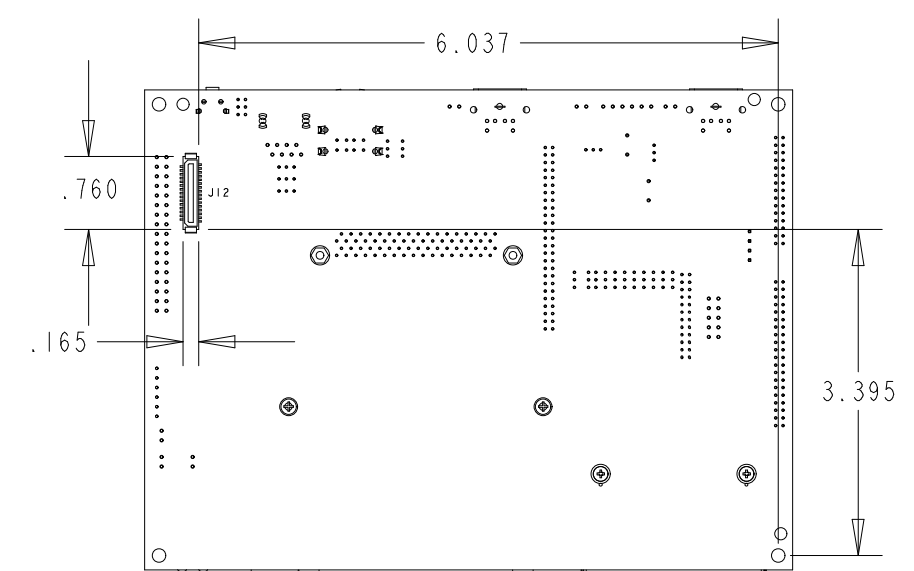
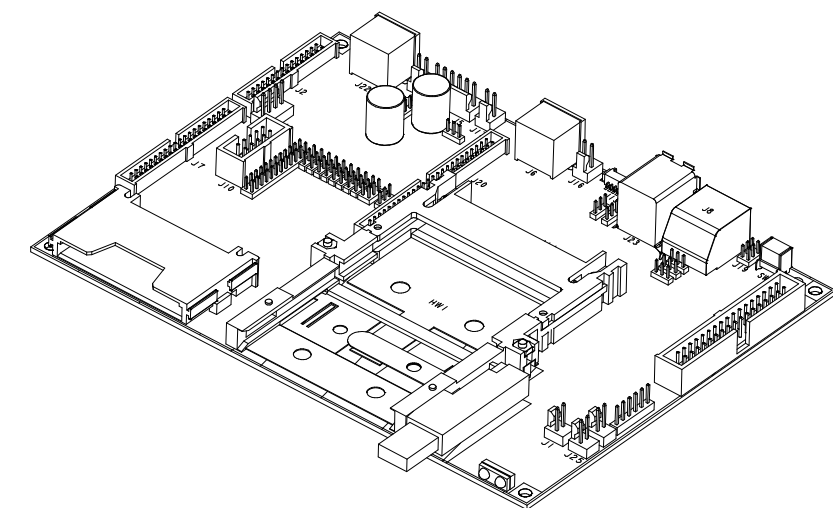


REV	DESCRIPTION	DATE	INIT
A	INITIAL RELEASE		
B	DRAWING UPDATE		



TOP VIEW

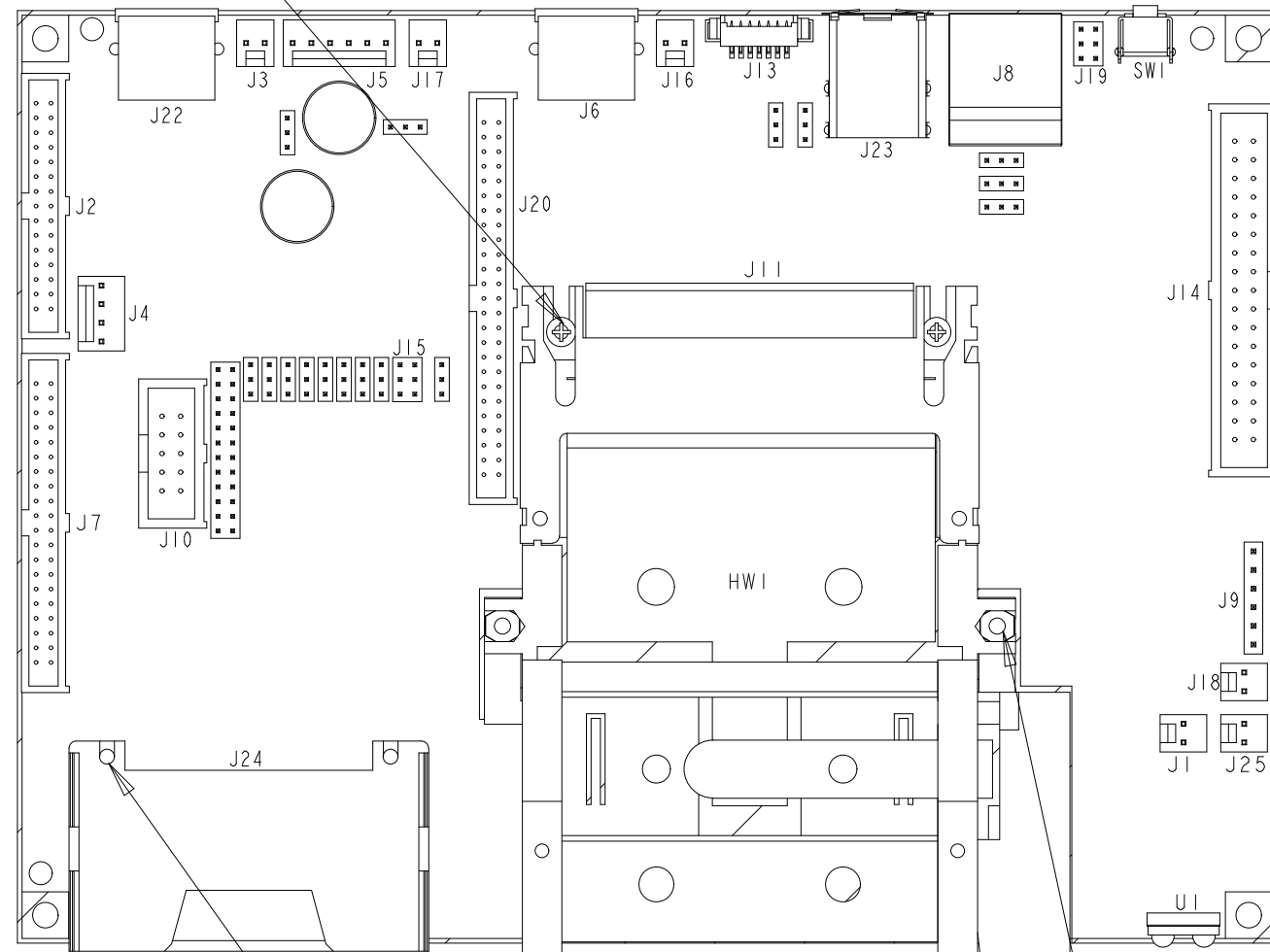


BOTTOM VIEW

- NOTES:
- DO NOT SCALE
 - ALWAYS REFER TO MANUFACTURERS DATASHEET FOR COMPONENT DIMENSIONS
 - DIMENSIONS ARE IN INCHES
 - APPLY LOCKTIGHT 222 OR EQUIVALENT THREADLOCKER TO ALL FASTENERS
 - TORQUE SCREWS 1.0 TO 1.5 MAX in-lbs

APPROVALS		APPLIED DATA SYSTEMS, Inc. 9140-A GUILFORD ROAD, COLUMBIA, MARYLAND 21061		
DRAWN BY: M. BLATTAU	DATE:	TITLE MECHANICAL DIMENSIONS ADS GRAPHICS MASTER		
CHECKED BY: P. DOMBROWSKI				
APPROVED BY: A. PHILIPPE		SIZE B	JOB NO.	DRAWING NO. 630110-9000
APPROVED BY: R. DAVIS				REV B
RELEASED BY: H. WILSON		SCALE 1/1	COPYRIGHT 2000, 2001 APPLIED DATA SYSTEMS, INC. ALL RIGHTS RESERVED	SHEET 1 OF 3

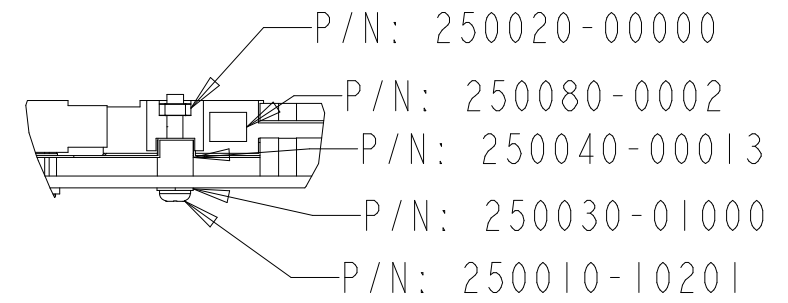
SEE DETAIL C
2 PLCS



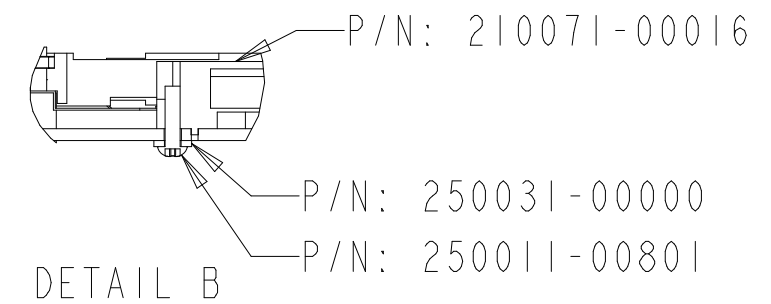
SEE DETAIL B
2 PLCS

SEE DETAIL A
2 PLCS

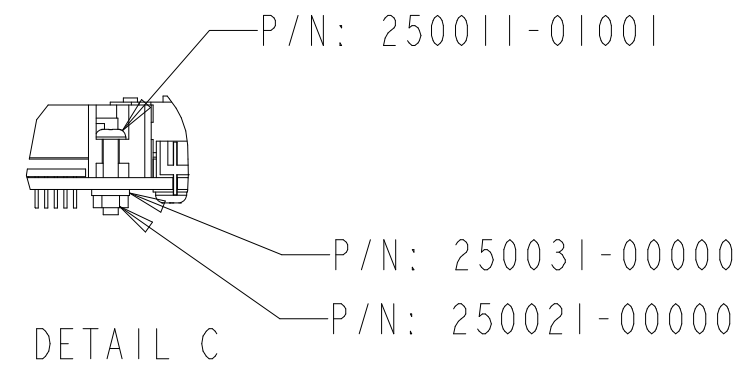
TOP



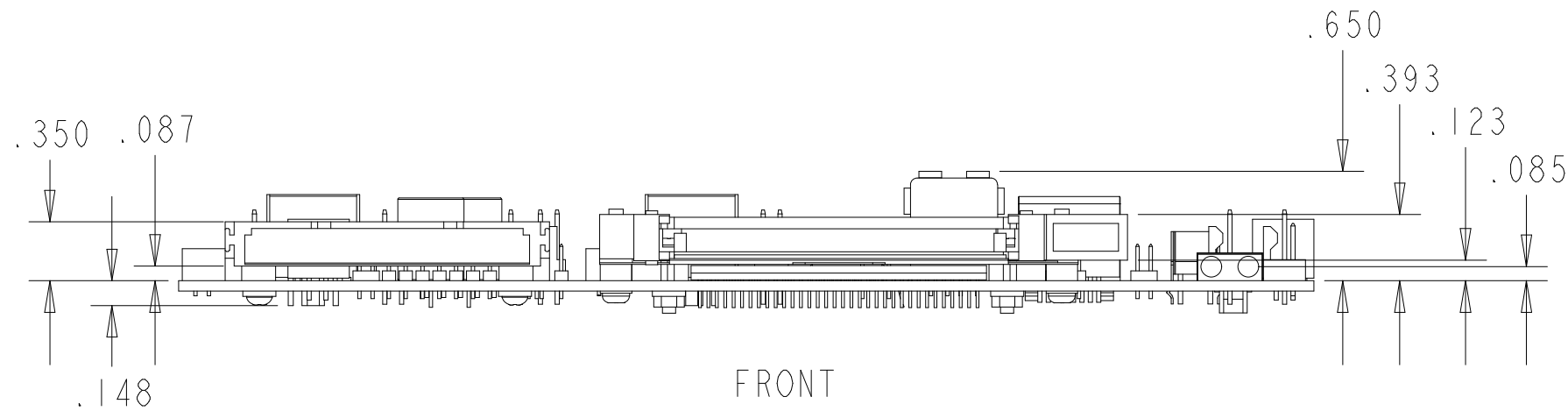
DETAIL A



DETAIL B



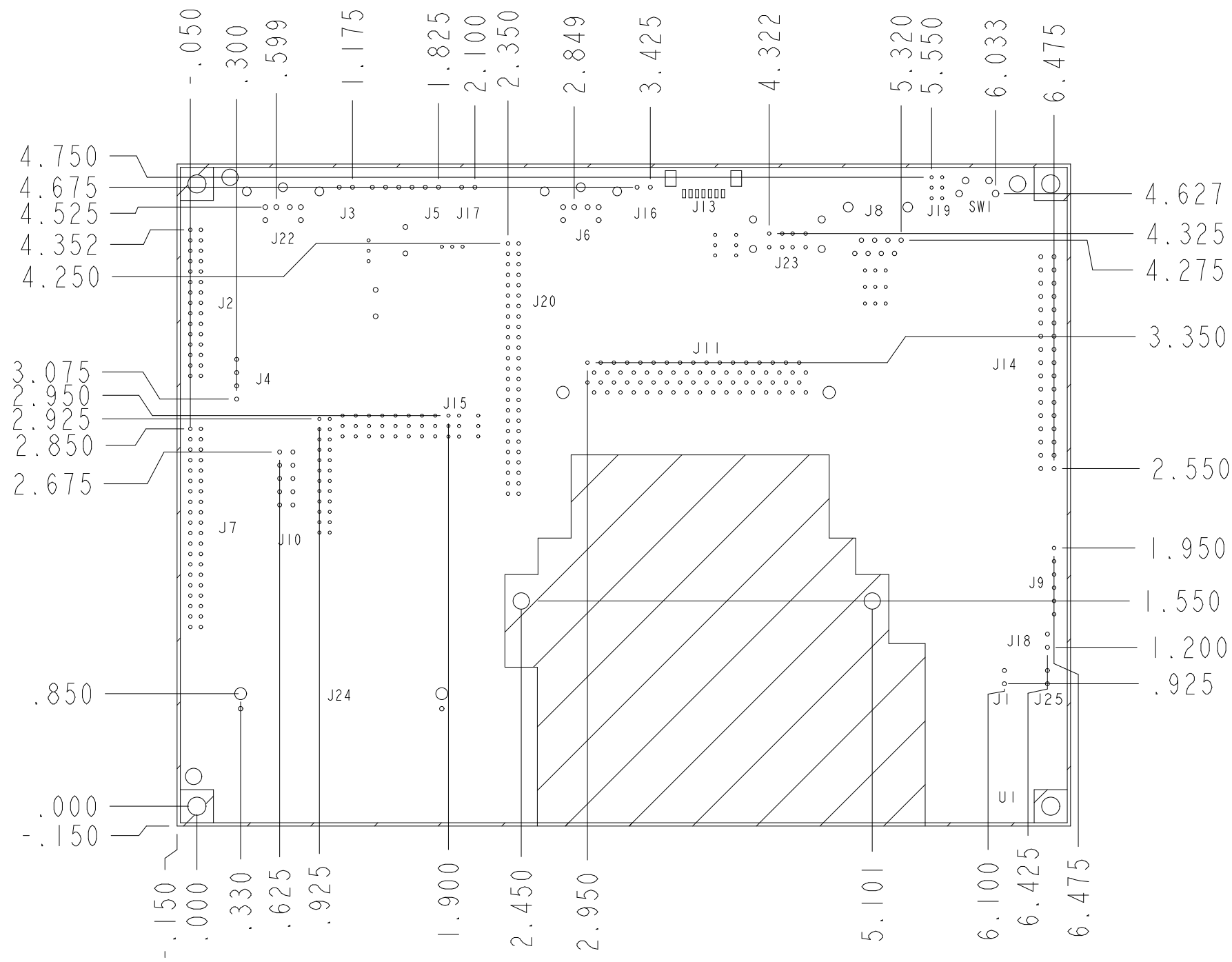
DETAIL C



FRONT

APPLIED DATA SYSTEMS, Inc.
9140-A GUILFORD ROAD, COLUMBIA, MARYLAND 21061

SIZE B	JOB NO.	DRAWING NO. 630110-9000	REV B
SCALE 1/1		COPYRIGHT 2000, 2001 APPLIED DATA SYSTEMS, INC. ALL RIGHTS RESERVED	SHEET 2 OF 3



HOLE LOCATIONS

I/O PARTS LIST (FOR GEOMETRIC REFERENCING ONLY)			
REF	ADS P/N	MANU.	MANUF. P/N
PWBI	170110-9000A	ADS	N/A
J1, J3, J16, J17, J18, J25	210060-01025	MOLEX	22-23-2021
J4	210060-01042	MOLEX	22-23-2041
J9	210060-01060	SAMTEC	MTSWI3607LS200LL
J5	210060-01062	MOLEX	22-23-2061
J15, J19	210060-02038	SAMTEC	TMM-103-03-T-D
J10	210060-02054	SAMTEC	TST-105-01-L-D
J2	210060-02158	SAMTEC	STMM-115-02-T-D
J14	210060-02174	SAMTEC	TST-117-01-G-D
J7	210060-02208	SAMTEC	STMM-120-02-T-D
J20	210060-02258	SAMTEC	STMM-125-02-T-D
J13	210060-01071	MOLEX	53261-0790
J8	210070-00044	AMP	555167-1
J6, J22	210070-00074	SINGATRON ENTPRS	MDJ-004-6P
J11	210070-00076	AMP	535655-1
J23	210070-00086	AMP	787745-2
J12	210071-00007	HIROSE	DF9B-31P-1V
J24	210071-00016	FCI	62453-022
HWI	250080-00002	AMP	146019-1
SW1	510011-00001	OMRON	B3F-3120
UI	U00471-00031	VISHAY	TFDU6101E-TR3

APPLIED DATA SYSTEMS, Inc.
9140-A GUILFORD ROAD, COLUMBIA, MARYLAND 21061

SIZE	JOB NO.	DRAWING NO.	REV
B		630110-9000	B
SCALE 1/1		COPYRIGHT 2000, 2001 APPLIED DATA SYSTEMS, INC. ALL RIGHTS RESERVED	SHEET 3 OF 3