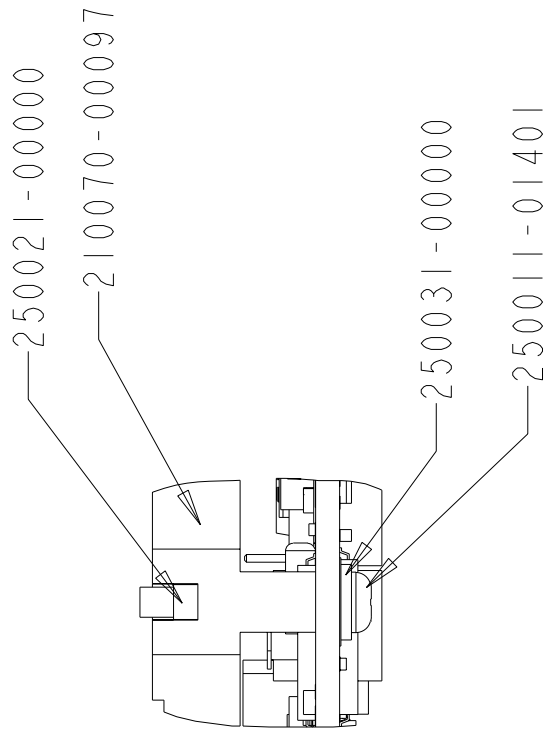
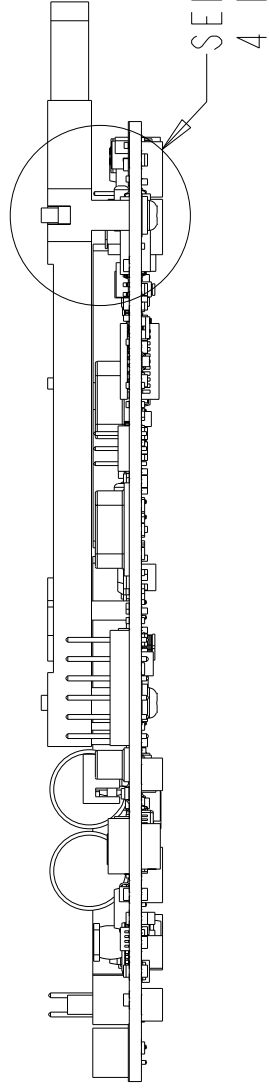


NOTES: (UNLESS OTHERWISE SPECIFIED):

1. PCB THICKNESS 0.062"
2. SEE SHEET 4 FOR PWB PANELIZATION
3. MAX SCREW TORQUE 1.5 IN-LBS

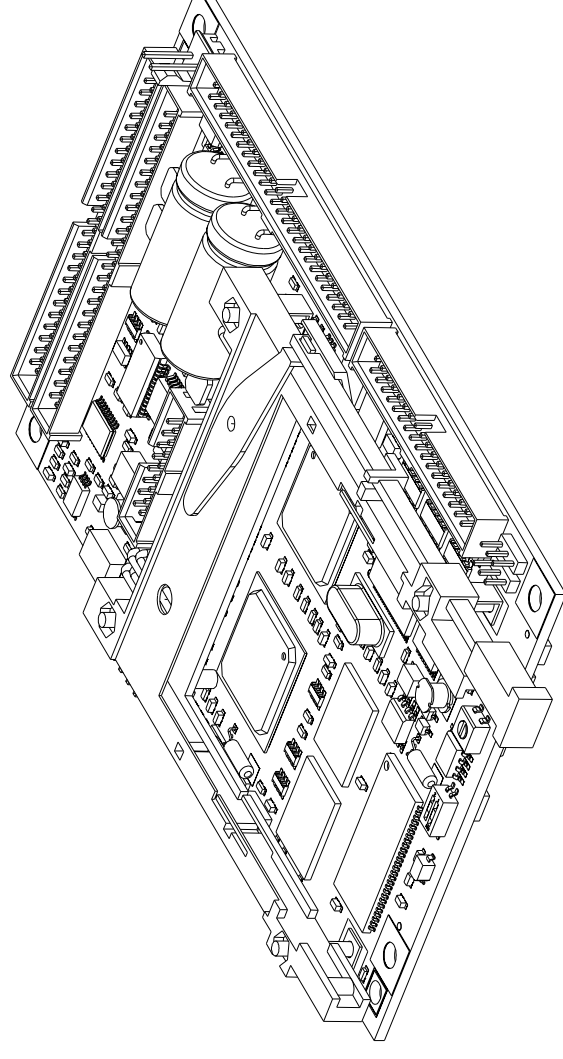


DETAIL A
(PCMCIA HARDWARE INSTALLATION)



SCALE 1.000

BITSY-X



REVISION

ZONE	REV	DESCRIPTION	DATE
	1	ORIGINAL RELEASE	5-3-02
	2	ENGINEERING UPDATE	10-7-02
	3	PROTOTYPE CHANGE	2-21-03
	A	ECN 115-00519	6-10-03
	B	ECN 115-00577	9-25-03
	C	ECN 115-00607	10-7-03

UNLESS OTHERWISE SPECIFIED
DIMENSIONS ARE IN INCHES
TOLERANCES ARE:
DECIMALS
.XX ± .01
.XXX ± .005
✓ RMS ALL MACHINED SURFACES
BREAK ALL SHARP EDGES
AND CORNERS, REMOVE BURRS.
MATERIAL

THIS DOCUMENT CONTAINS INFORMATION
PROPRIETARY TO ADS AND
SHALL NOT BE USED FOR ENGINEERING
DESIGN, PROCUREMENT OR MANUFACTURER
IN WHOLE OR IN PART WITHOUT THE
CONSENT OF ADS
MECHANICAL ENGINEER

M BLATTAU 2-24-03

ADS

FINISH

APPLIED DATA SYSTEMS

9140 Guilford Rd. Columbia, Maryland 21046 USA

TITLE

BITSY-X
MECHANICAL DETAIL

SIZE DWG. NO.

B 630115-0000

REV

C

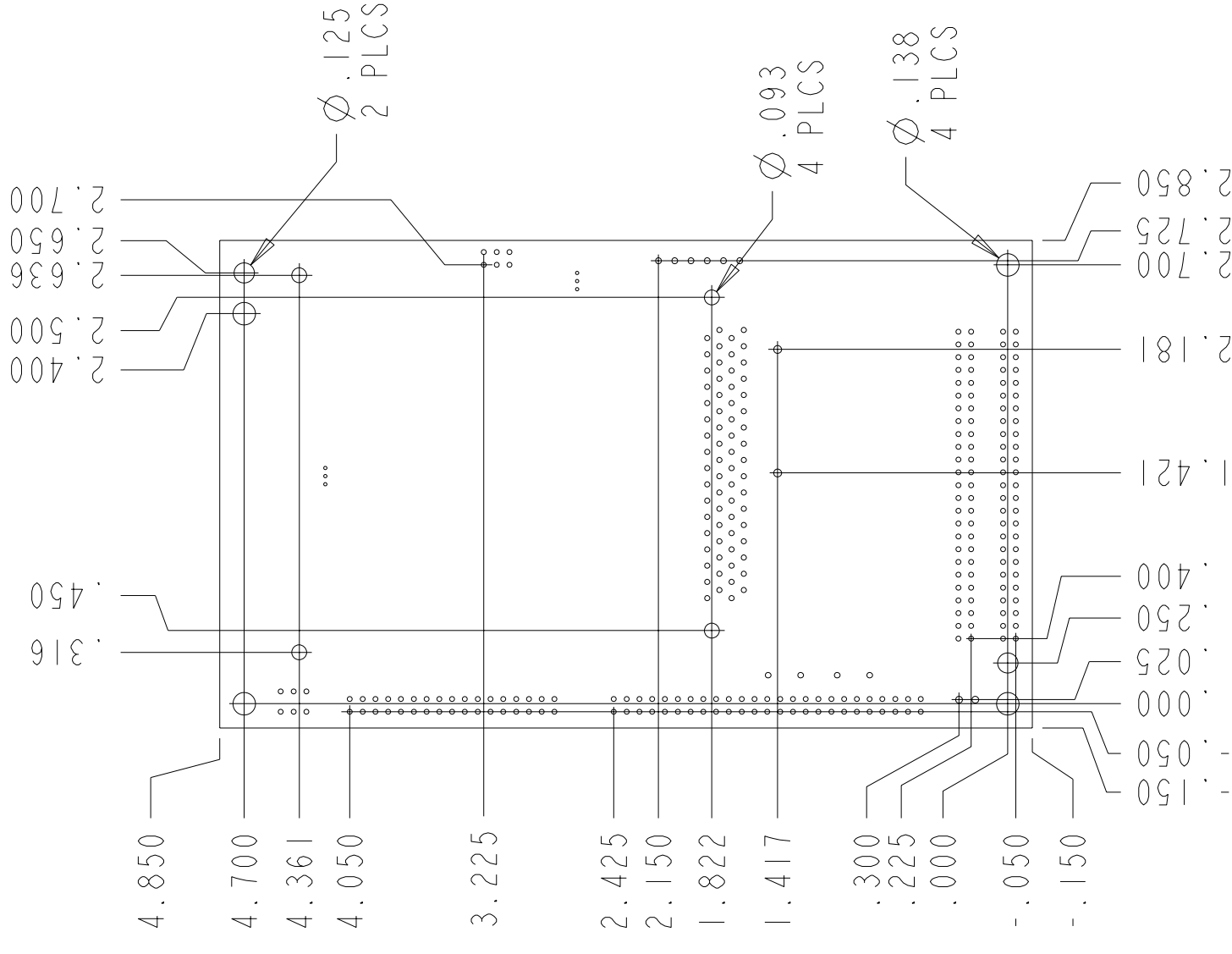
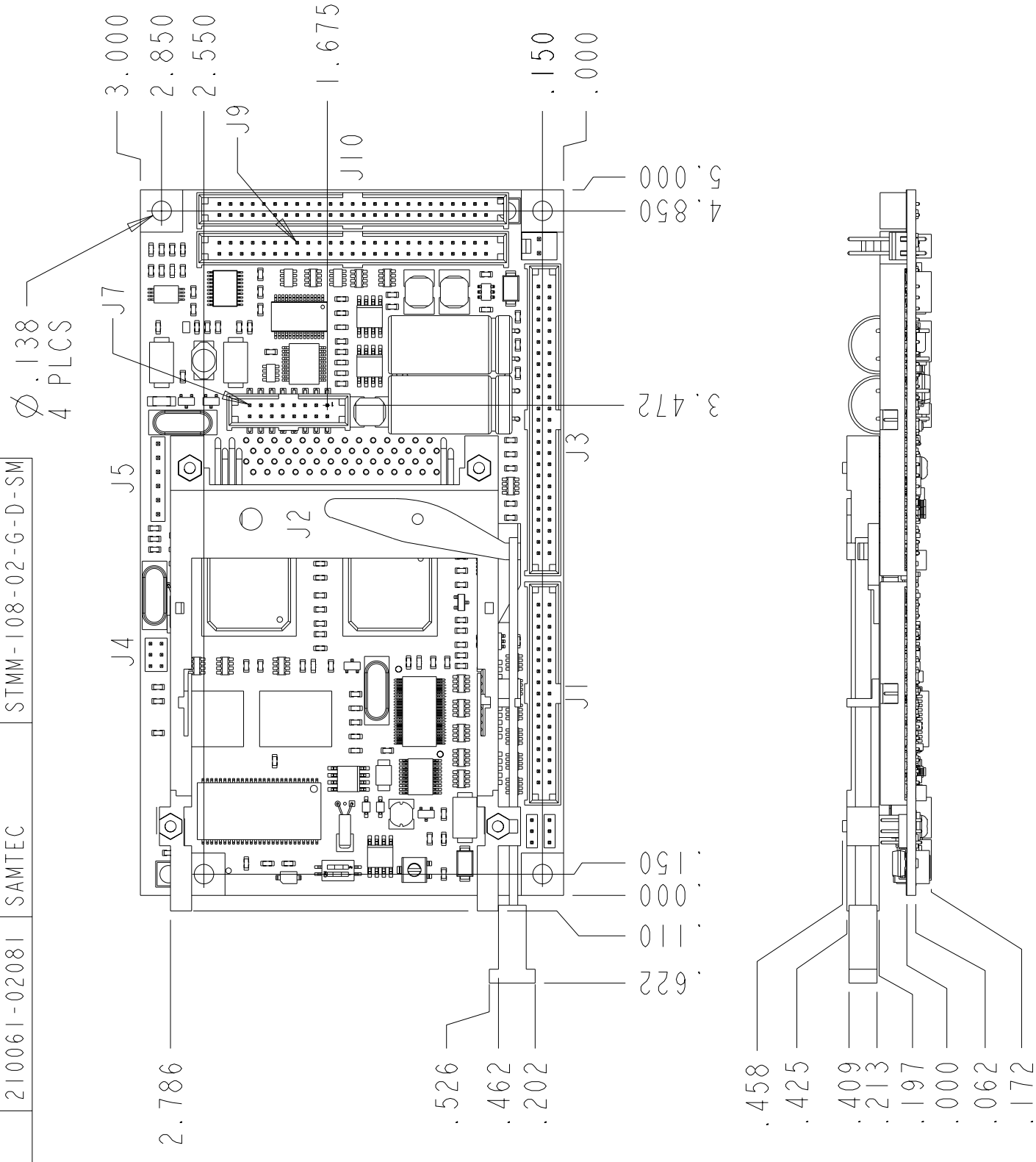
SCALE: 1.000

DO NOT SCALE DRAWING SHEET

1 OF 4

PARTS LIST (FOR REFERENCE ONLY)

PWB1	170115-0000X	ADS	N/A
J6	210060-01025	MOLEX	22-23-2021
J5	210060-01060	SAMTEC	MTSWI36076LS200LL
J4	210060-2038	SAMTEC	TMM-103-03-T-D
J1	210060-0217A	SAMTEC	STMM-117-02-T-D
J3, J9, J10	210060-02258	SAMTEC	STMM-125-02-T-D
J2	210070-00097	FCI/BERG	95620-050CA
J7	210061-02081	SAMTEC	STMM-108-02-G-D-SM



SIZE DWG. NO.

B 630115-0000

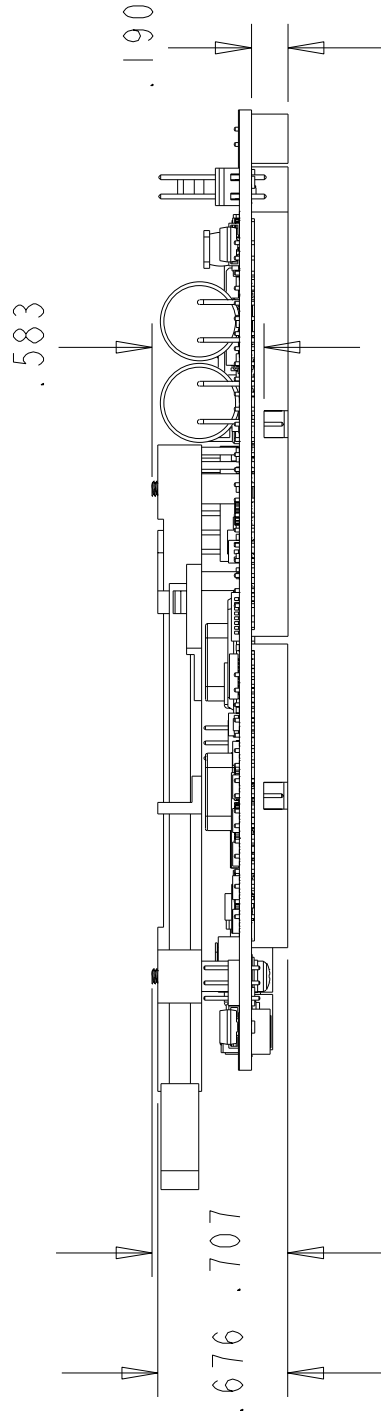
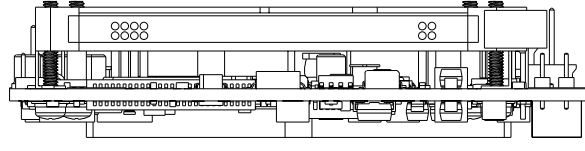
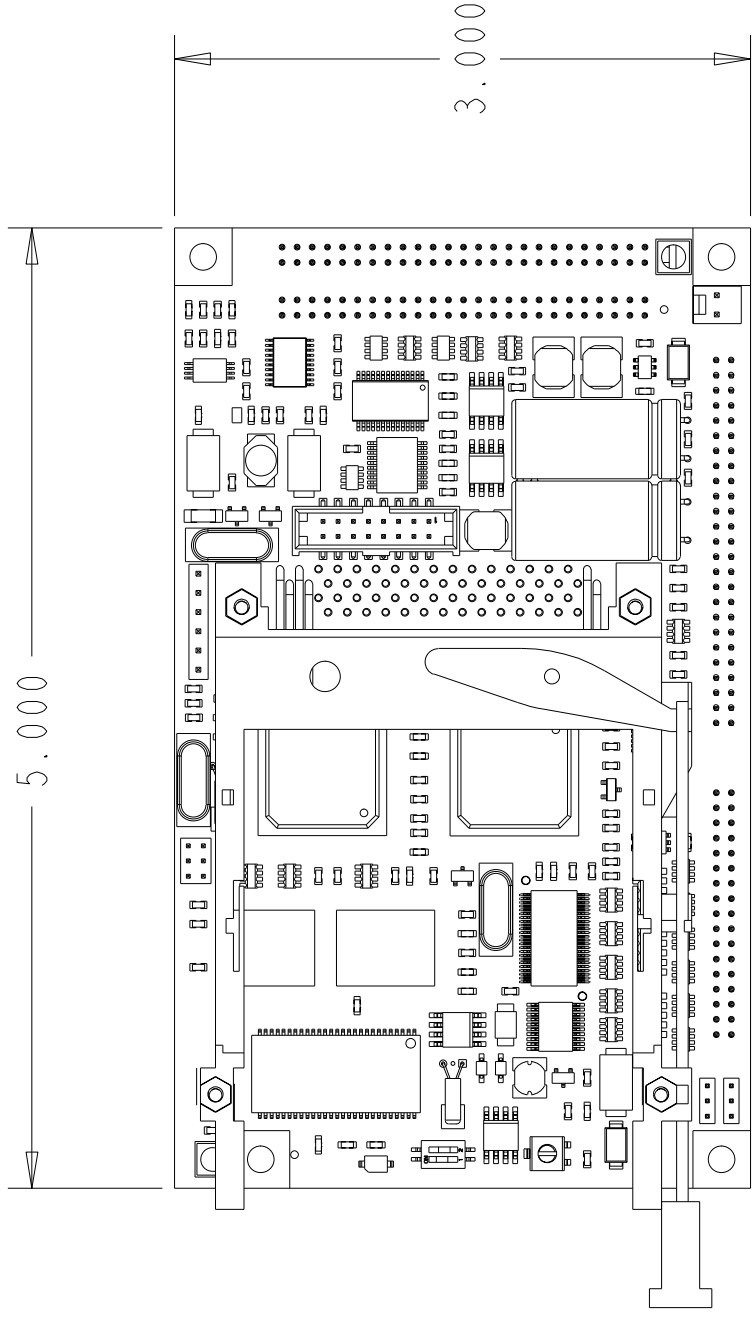
REV C

SCALE: 1.000

DO NOT SCALE DRAWING SHEET

2 OF 4

BOTTOM MOUNT VARIANT



SIZE	DWG. NO.	REV
B	630115-0000	C
SCALE: 1.000		DO NOT SCALE DRAWING SHEET 3 OF 4

4

3

2

D

C

B

A

D

C

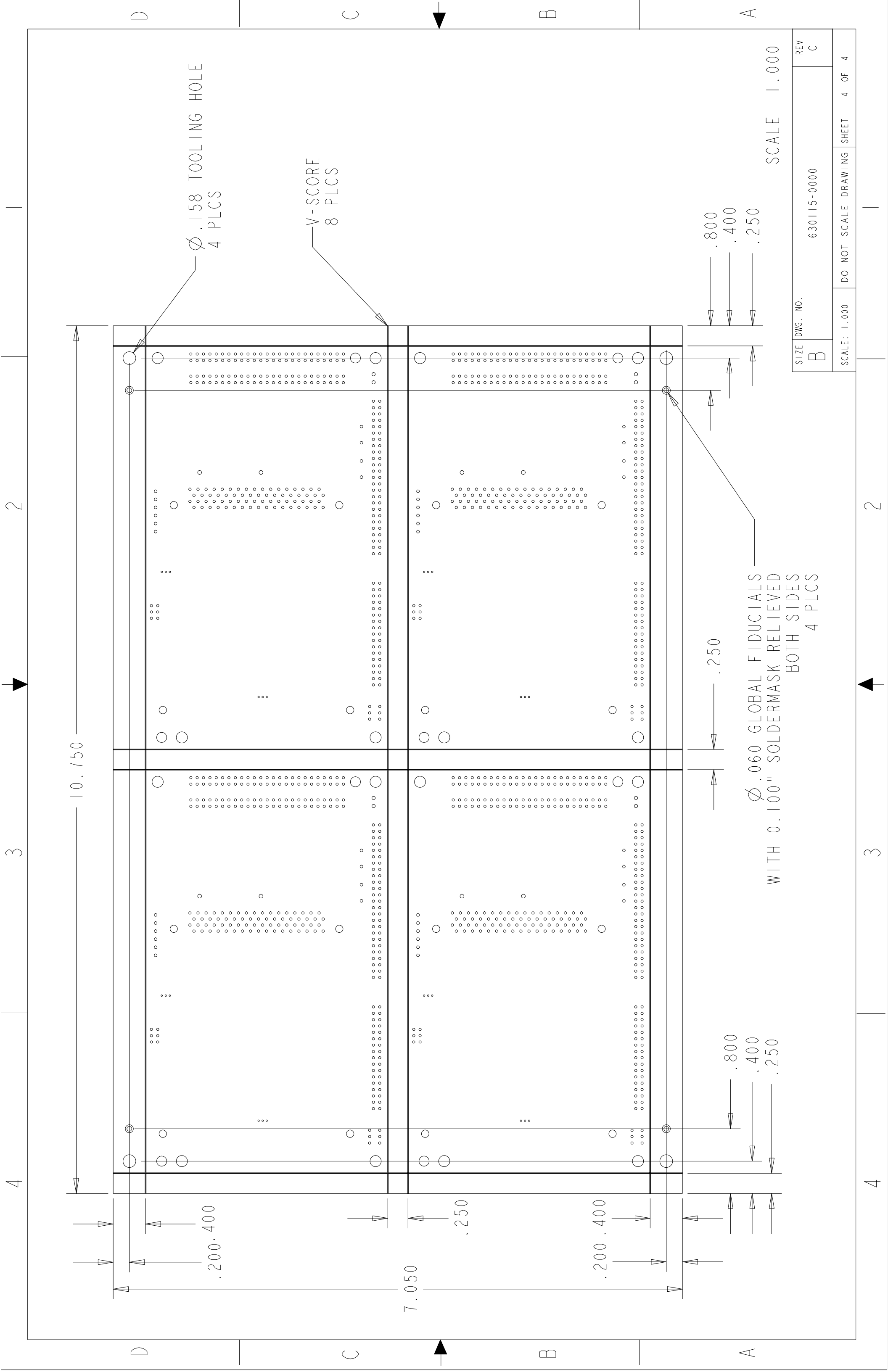
B

A

4

3

2



10.750

7.050

Ø .158 TOOLING HOLE
4 PLCS

V-SCORE
8 PLCS

.800
.400
.250

Ø .060 GLOBAL FIDUCIALS
WITH 0.100" SOLDERMASK RELIEVED
BOTH SIDES
4 PLCS

SCALE 1.000

SIZE	DWG. NO.	REV
B	630115-0000	C
SCALE: 1.000		DO NOT SCALE DRAWING SHEET 4 OF 4

2

3

4