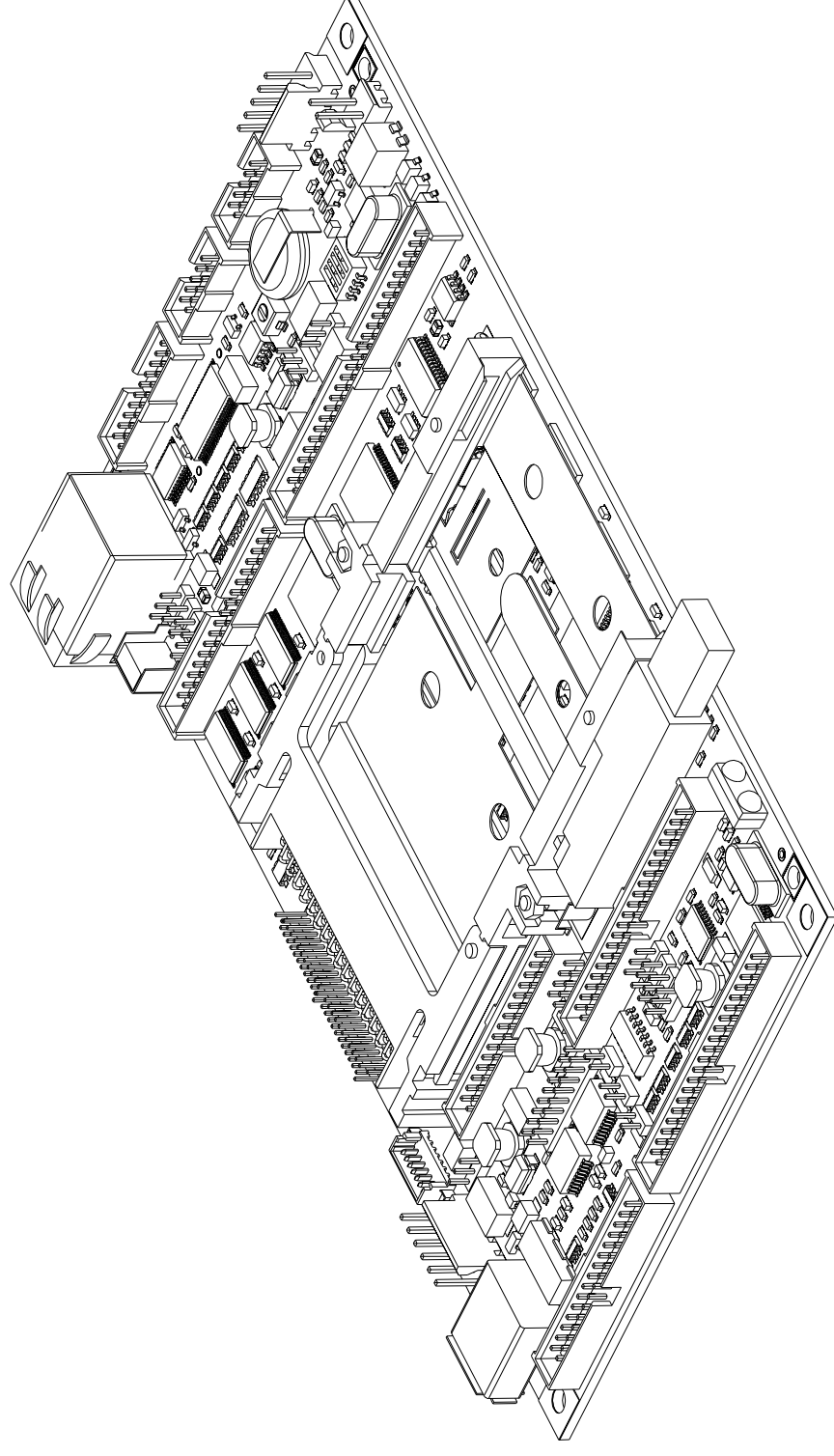


NOTES: (UNLESS OTHERWISE SPECIFIED):

1. SEE SHEET 3 FOR PWB RAIL DIMENSIONS

| CONNECTOR LIST (REFERENCE ONLY) | | | | | |
|---------------------------------|--------------|--------|-----------------|---------|--|
| REF. DESG. | ADS P/N | MANU. | PART NUMBER | PLATING | |
| J1 | 210070-00098 | AMP | 787616-1 | GOLD | |
| J2 | 210060-01062 | MOLEX | 22-23-2061 | TIN | |
| J3 | 210061-01072 | MOLEX | 53398-0790 | TIN | |
| J4 | 210060-03505 | SAMTEC | ASP-100925-01 | GOLD | |
| J7 | 210070-00174 | PULSE | J0026D21B | GOLD | |
| J8, J9 | 210060-02158 | SAMTEC | STMM-115-02-T-D | TIN | |
| J10 | 210070-00142 | AMP | 535655-2 | GOLD | |
| J11 | 210060-0217A | SAMTEC | STMM-117-02-T-D | TIN | |
| J12 | 210070-00113 | MOLEX | 87331-2020 | GOLD | |
| J13, J16 | 210060-02058 | SAMTEC | STMM-105-01-T-D | TIN | |
| J14, J15 | 210060-02208 | SAMTEC | STMM-120-02-T-D | TIN | |
| J17 | 210060-01025 | MOLEX | 22-23-2021 | TIN | |
| J18 | 210060-01052 | MOLEX | 22-23-2051 | TIN | |
| J19 | 210071-00007 | HIROSE | DF9B-31P-1V | TIN | |
| J40 | 210060-02258 | SAMTEC | STMM-125-02-T-D | TIN | |



UNLESS OTHERWISE SPECIFIED
DIMENSIONS ARE IN INCHES
TOLERANCES ARE:
DECIMALS
.XX ± .01
.XXX ± .005
✓ RMS ALL MACHINED SURFACES
BREAK ALL SHARP EDGES
AND CORNERS, REMOVE BURRS.
MATERIAL
FINISH

THIS DOCUMENT CONTAINS INFORMATION
PROPRIETARY TO ADS AND
SHALL NOT BE USED FOR ENGINEERING
DESIGN, PROCUREMENT OR MANUFACTURER
IN WHOLE OR IN PART WITHOUT THE
CONSENT OF ADS
MECHANICAL ENGINEER

M BLATTAU 7-30-03

ADS

APPLIED DATA SYSTEMS
9140 Guilford Rd. Columbia, Maryland 21046 USA

TITLE

VGX MECHANICAL
DETAIL

SIZE DWG. NO.

B 630116-2000

REV

2

SCALE: 0.500

DO NOT SCALE DRAWING SHEET

1 OF 3

REVISION

DESCRIPTION

DATE

ZONE

REV

1 ORIGINAL RELEASE

7-30-03

2 PROTOTYPE RELEASE

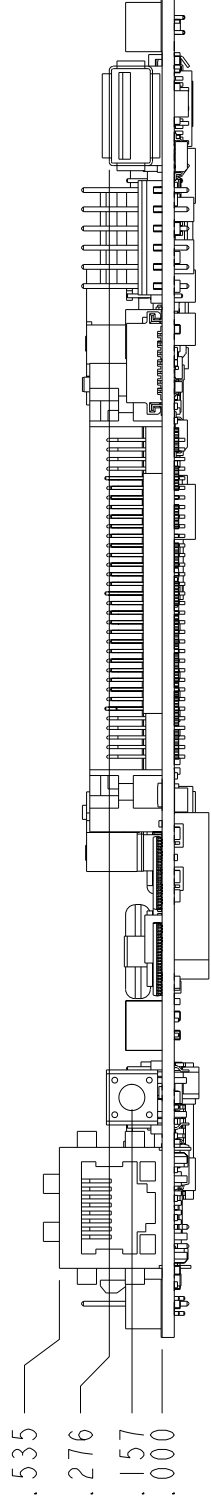
12-16-03

4

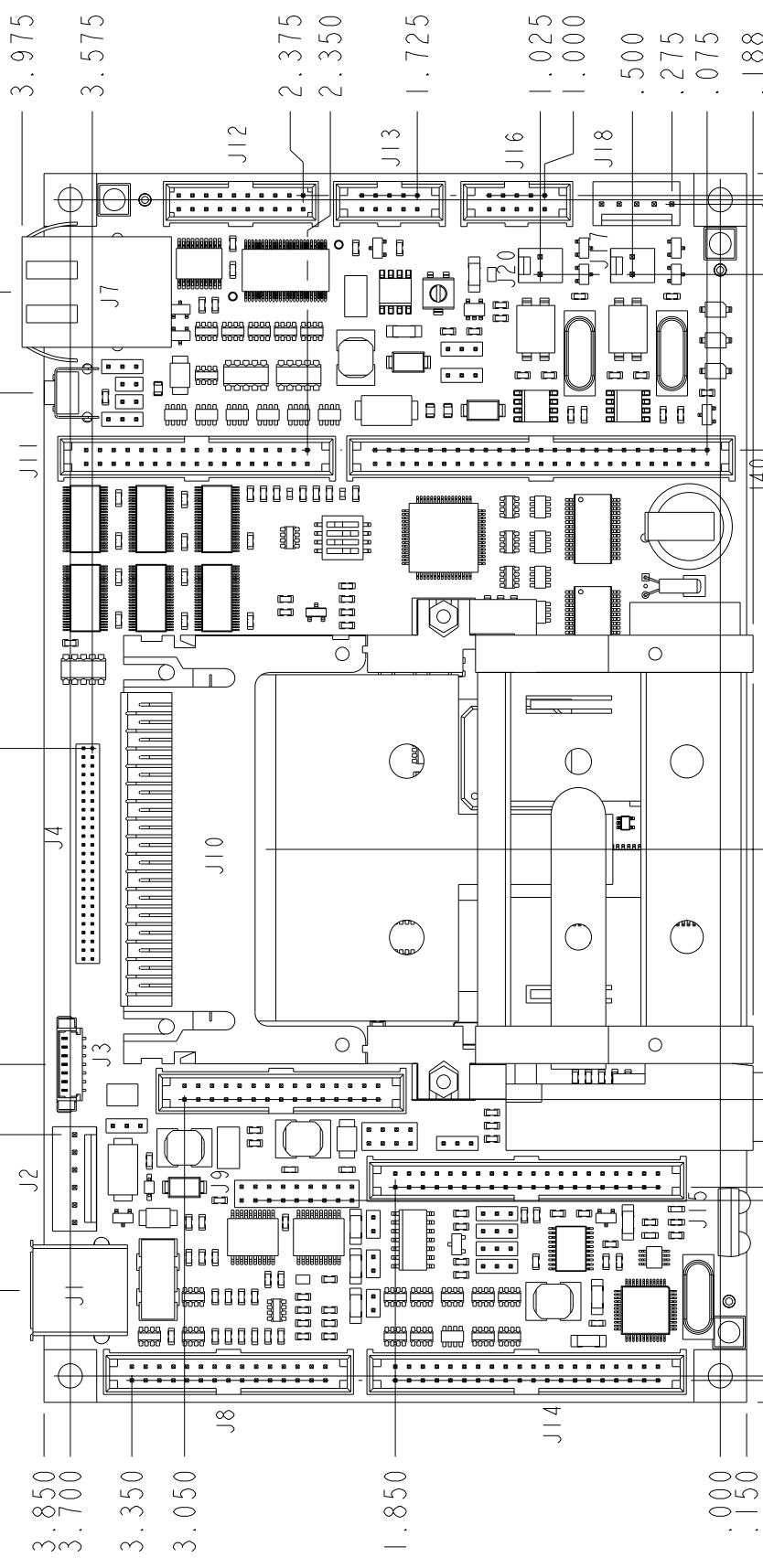
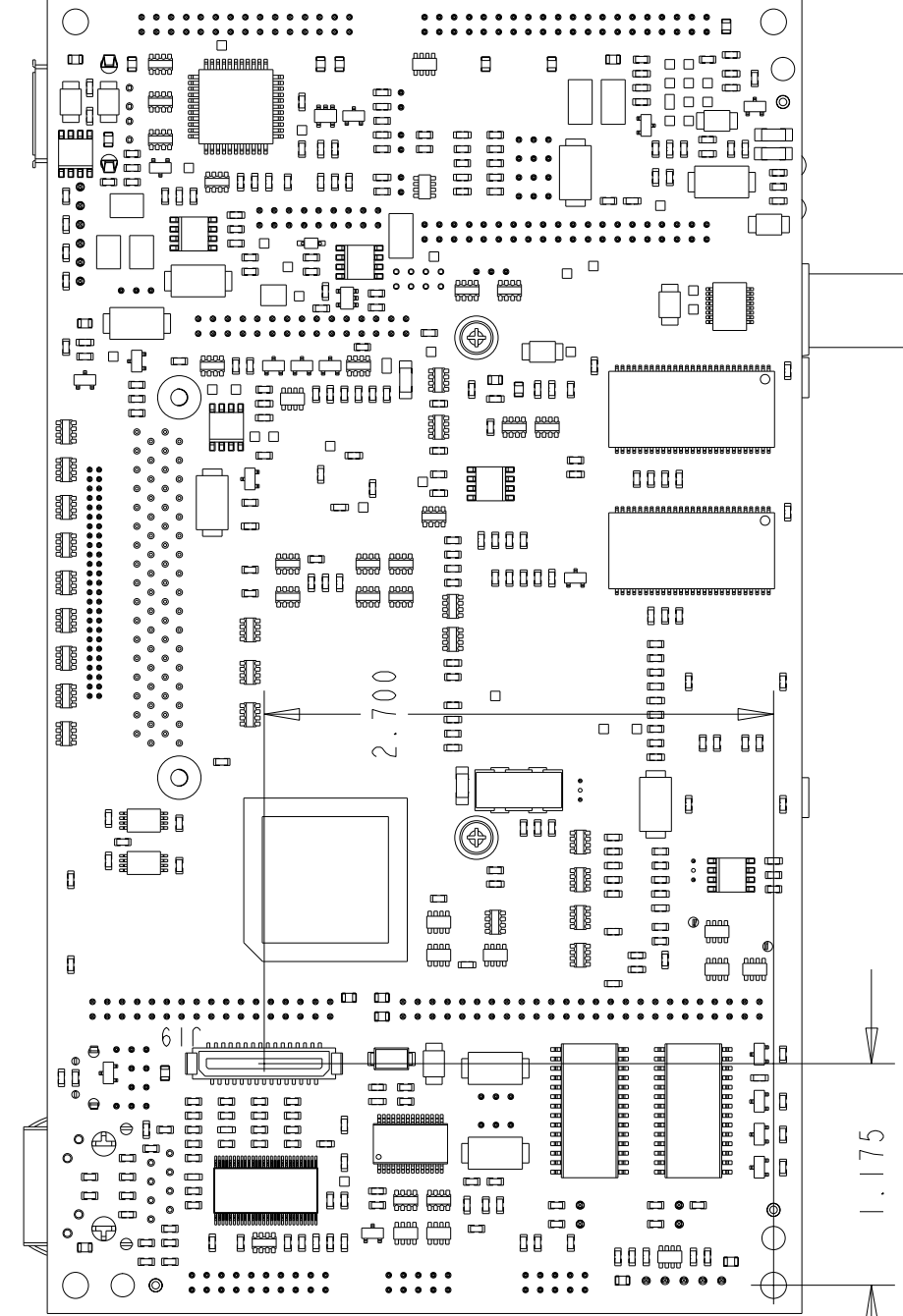
3

2

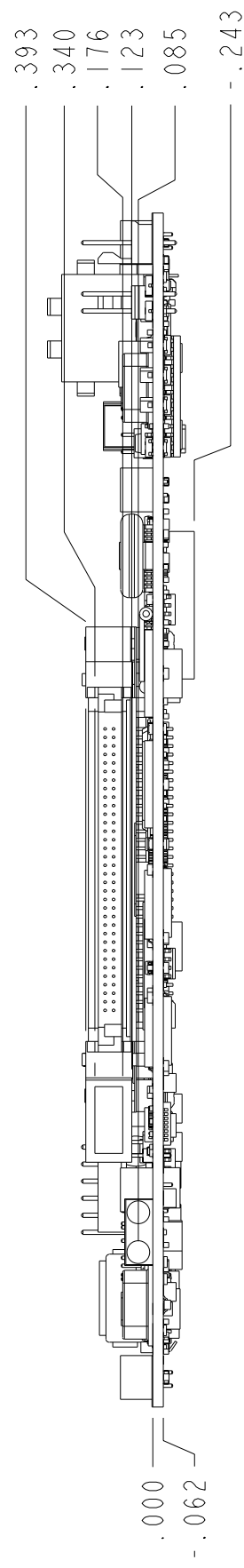
1



3.850
3.700
3.350
3.050
1.850
1.50
1.000
1.000
1.284
1.338
1.575
1.727
1.781
3.000
4.221
5.275
6.275
6.675
6.700
6.725
6.850



1.000
1.000
1.075
1.284
1.338
1.575
1.727
1.781
3.000
4.221
5.275
6.275
6.675
6.700
6.725
6.850



A

C

B

D

| | | |
|------|-------------|-----|
| SIZE | DWG. NO. | REV |
| B | 630116-2000 | 2 |

SCALE: 0.500 DO NOT SCALE DRAWING SHEET 2 OF 3

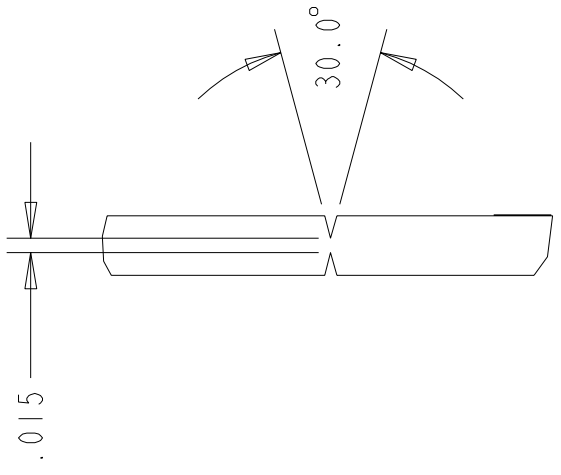
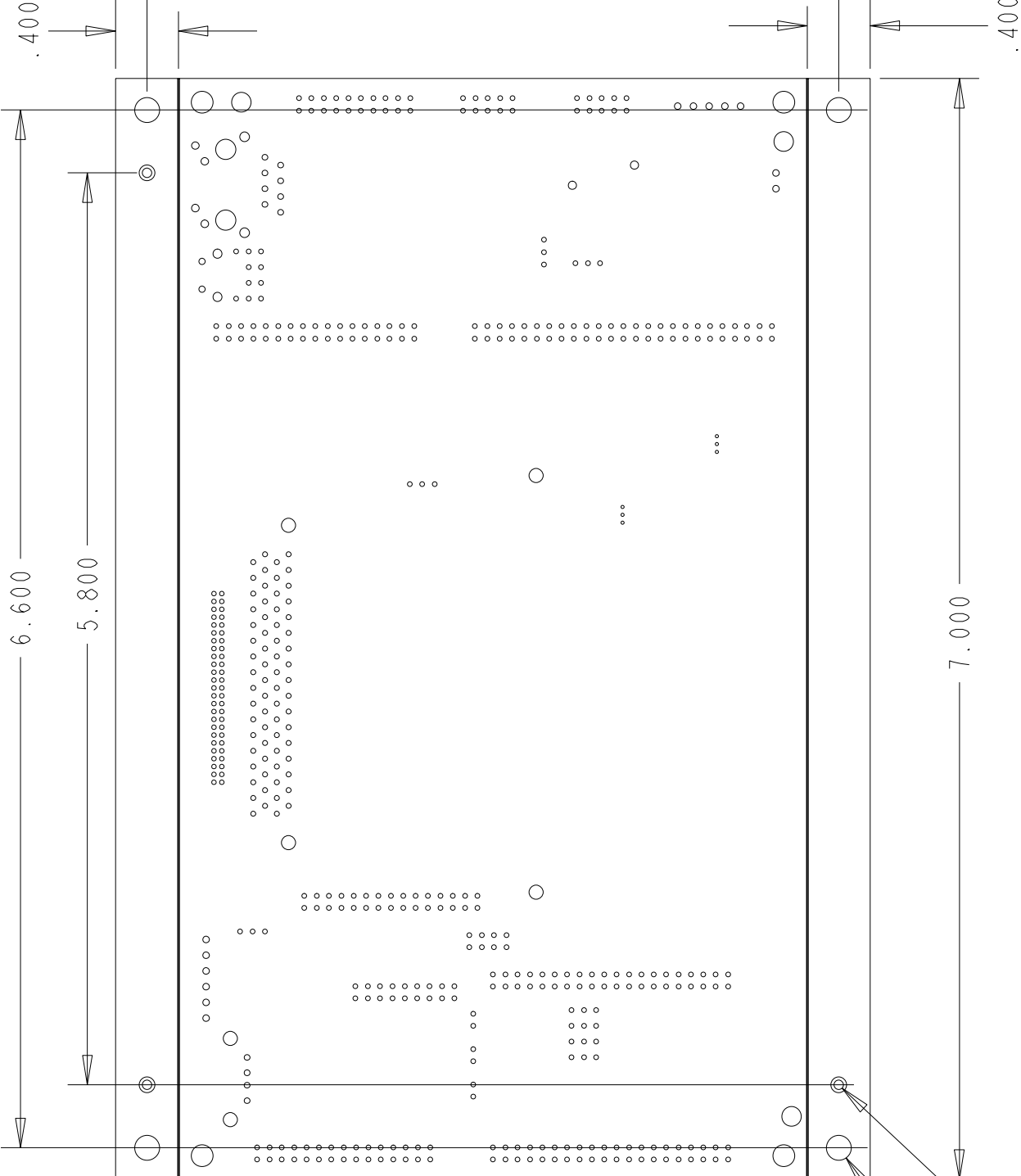
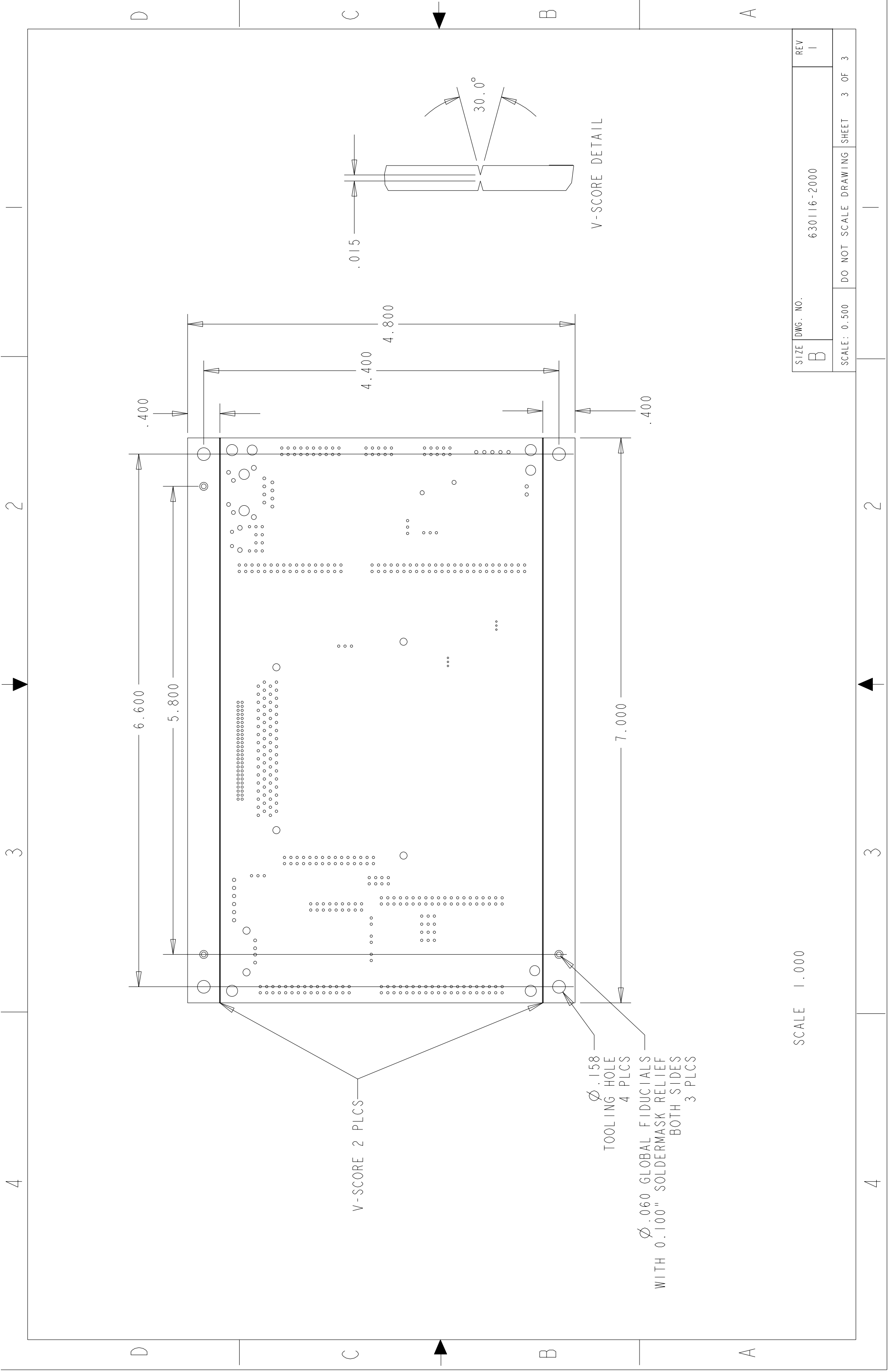
SCALE 1.000

4

3

2

1



V-SCORE 2 PLCS

Ø .158
TOOLING HOLE
4 PLCS

Ø .060 GLOBAL FIDUCIALS
WITH 0.100" SOLDERMASK RELIEF
BOTH SIDES
3 PLCS

V-SCORE DETAIL

SCALE 1.000

SIZE DWG. NO.
B 630116-2000

REV
1

SCALE: 0.500 DO NOT SCALE DRAWING SHEET 3 OF 3

2

3

4

2

3

4

D

C

B

A

D

C

B

A